

# ATTACHMATE® RALLY!™

For AS/400®

Windows®, Windows 95, Windows NT®

version 6.2

## Your reliable solution for advanced connectivity.

RALLY! for AS/400 version 6.2 is a comprehensive Windows solution for AS/400 connectivity with the best performing 32-bit APPC router on the market. RALLY! raises the competitive bar for 5250 emulation, going beyond traditional methods of accessing AS/400 information with Attachmate's host-aware technology. Its advanced functionality allows transparent AS/400 access without the use of macros, providing unparalleled performance gains. Additionally, RALLY! is compatible with Attachmate's client/server tools allowing simplified development of client/server applications.

RALLY! for AS/400 is designed to assist IS professionals with control and efficiency in migration to a decentralized host computing environment which integrates TCP/IP support and the 32-bit standard on a common desktop. By delivering more tightly integrated technology, streamlined administration, and an array of development tools, RALLY! maximizes desktop connectivity performance while minimizing the cost of installation, configuration and support.

## Experience best of breed APPC router functionality.

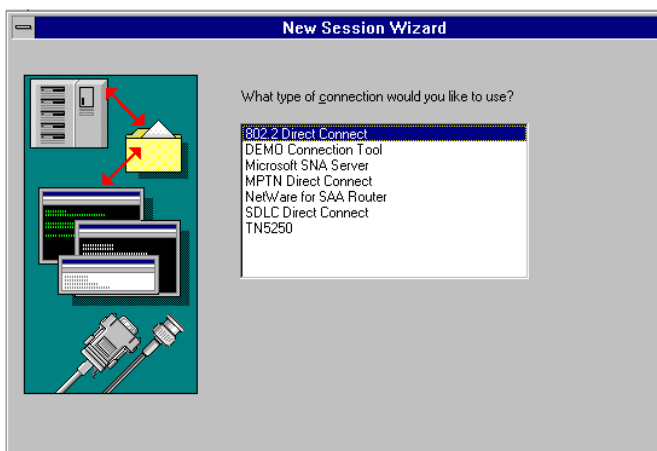
RALLY!'s APPC router, which supports Windows 95 and Windows NT, is fully integrated into the 32-bit client, so you experience dramatic performance enhancements in terms of speed, reliability and configuration ease. By including the best APPC router in the industry, RALLY! improves end-user productivity – and administrator efficiency soars because less time is spent on troubleshooting router issues. RALLY! also supports IBM® Client Access, TN5250, and the NetSoft® 32-bit router, so you gain complete network independence plus the freedom to choose your connection type.

## Implement a complete migration solution.

As you move to 32-bit operating systems, you are faced with high costs of migration, combined with the dilemma of a mixed Windows environment during the transition. RALLY for AS/400 addresses this by combining both 16- and 32-bit products on one CD for a seamless 32-bit migration. You get the flexibility of running RALLY! on any Windows platform so you can migrate at your own pace, while also realizing a tremendous cost savings.

## Control technology change.

RALLY! supports both the 16- and 32-bit IBM AnyNet® router, providing an easy migration path for companies standardizing on TCP/IP. As organizations look toward creating internal Intranets, TCP/IP is rapidly becoming the connection of choice because of its ability to connect dissimilar computers and protocols together. With RALLY! for AS/400, customers can make the transition to TCP/IP with peace of mind, knowing they can run their existing APPC applications over TCP/IP without any modifications.



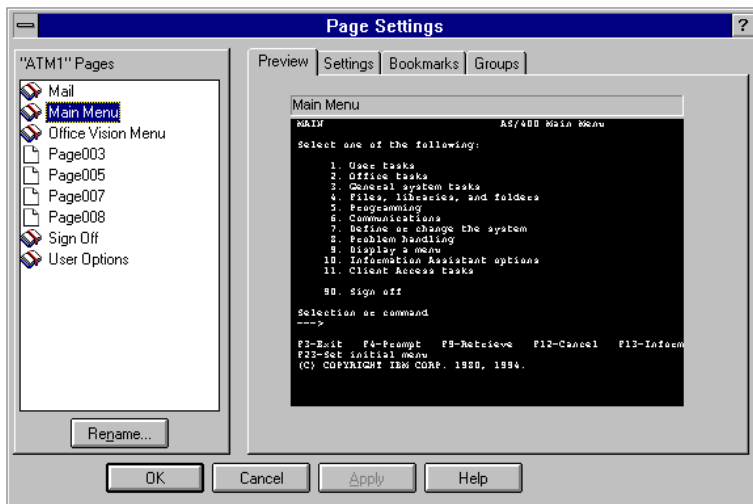
RALLY! uses the Windows 95 Session Wizard for intuitive configuration of your host settings.

 **Attachmate**™

PRODUCT PROFILE

## New in this release

- Windows 95 and NT support
- 16- and 32-bit versions on one CD
- 16- and 32-bit IBM AnyNet support (Multi-Protocol Transport Networking)
- New Attachmate 32-bit APPC router
- Data Queue support
- Advanced host-aware technology



*Attachmate's host-aware technology allows you to bookmark specific host screens, and execute page events with a single mouse click.*

### Enjoy unrivaled ease-of-use.

RALLY! for AS/400 simplifies end-user access through handy toolbars and QuickPads that truly enhance productivity and reduce training costs. Developers benefit as well with the powerful suite of development tools available, which enable easy creation of client/server applications that integrate the Windows desktop with the AS/400 database and applications. RALLY! is also Microsoft® BackOffice™ compatible. RALLY! integrates the look and feel of Microsoft Office into its menus and toolbars, dramatically increasing usability.

### Simplify administrative tasks.

RALLY! for AS/400 provides several tools designed to simplify administrative tasks and place the emphasis on productivity rather than troubleshooting. Setup options are designed to make installation as easy as possible. RALLY! supports the Windows 95 Setup Wizard, network installation and silent install, which lets you record a custom install script for unattended installation. RALLY! also supports command line batch file transfer, and send and receive file transfer, so transferring files to and from the AS/400 is easier than ever. And, with the Migration Wizard, existing RALLY! 16-bit configuration files can be converted to 32-bit in a snap – no reconfiguration required.

Dissolve the complexity of host interactions. Advanced host-aware functionality simplifies interactions with your AS/400. Navigate without the need for macros, customize host screens, and integrate AS/400 information into your desktop applications.

**Document integration with OLE 2.0 support.** RALLY! for AS/400 fully exploits OLE 2.0 in both Windows 95 and Windows NT, so you are able to create transparent links between Windows documents and host documents. OLE 2.0

technology allows you to link host data with Windows applications such as Microsoft® Office, Lotus® SmartSuite®, and WordPerfect® Office. The information becomes fully integrated and transparently linked so any change to pertinent host data can be refreshed easily in your desktop application files. No programming or macros are required. Savvy intelligence like this makes RALLY! a true partner with your AS/400.

**Treat host sessions as documents.** Host sessions can be saved as desktop documents complete with “page events,” the unique settings for customized toolbars, hot spots, QuickPad™ and colors. These desktop session documents can also include a list of bookmarks to make host navigation effortless.

**Place bookmarks to access information immediately and automatically.** Bookmarks extend the ease-of-use and simplicity of Web browsers to your AS/400. Bookmarks transport users directly to host pages to give you the easiest possible way to access AS/400 applications in your enterprise. Combined with page events, working with AS/400 applications becomes intuitive and far more productive.



### Smooth client/server transition.

RALLY! for AS/400 was built from scratch as a client/server development platform. With support for Attachmate's EXTRA!® Developer Series products such as QuickApp® and QuickDB™, developers have a solid foundation on which to build new enterprise client/server solutions and empower users. Developers can take full advantage of 32-bit APIs, reusable navigation objects, and APPC to rapidly create graphical transaction-processing applications. RALLY! also supports 16-bit client/server applications in newer 32-bit environments, providing industry-leading migration protection for your existing client/server applications.

**Full 32-bit API support.** RALLY! ships with 12 completely enhanced APIs that will match or exceed performance of any other competitor in the industry. API speed gains provide better performance and increased productivity running third-party API applications and new or existing custom developed API applications. Full support for 32-bit APIs includes HLLAPI, EXTRA! Basic, ATMAPI (EAL), and APPC.

### Save steps with productivity enhancements.

RALLY! for AS/400 simplifies tasks with these additional features:

- **Data Queue support.** Maintains record processing on the AS/400 host rather than the workstation.
- **PC organizer.** Easily interface between your PC and IBM OfficeVision® with this menu system.
- **Context-sensitive online help.** Simply click on the context-sensitive function, click on the topic, and the correct information will be displayed.
- **Auto sign-on support.** Improve efficiency with auto sign-on support to your APPC Servers.

### Award-winning solutions and support.

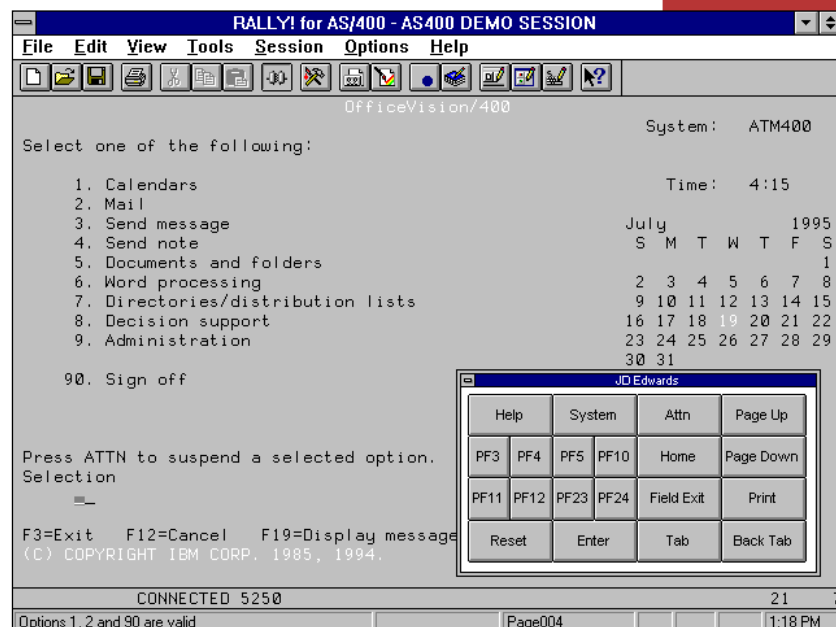
Attachmate is the leading supplier of enterprise information access software and services to major corporations, large organizations and government agencies worldwide. The company's desktop-to-host connectivity solutions, object-oriented client and server software, authoring tools, management software, and hardware adapters extend mission-critical applications and data to end users. Attachmate's award-winning solutions allow users anywhere to access business information residing within as well outside their organizations.

For first-time installations of Attachmate software, we offer 60 days of complimentary SUPPORTWARE!®, a service that helps you get up and running and keeps you-up-to-date. Attachmate offers a full spectrum of SUPPORTWARE! plans — Enhanced, Elite, Strategic, and Global — tailored to meet your organization's unique needs. For information on Attachmate services, call 800-288-5232.

### Call today for more information.

For more information about the RALLY! for AS/400, contact your local Attachmate reseller or call us toll-free in the United States or Canada at **800-426-6283**. For international sales information, call USA **206-644-4010** or contact your nearest sales office.

*Attachmate's  
32-bit router is  
up to 75% faster  
than competitive  
offerings.*



*RALLY! comes with a predefined set of QuickPads for your commonly used AS/400 applications, or customize your own for true ease-of-use.*

Attachmate Corporation  
3617 131st Ave SE  
Bellevue, WA 98006 USA

Phone:  
(800) 426-6283  
(206) 644-4010  
Fax: (206) 747-9924

Customer Support  
(800) 688-3270

International Fax:  
(206) 649-6675

FaxBack: (206) 649-6595

World Wide Web:  
www.attachmate.com

Australia (Melbourne)  
(61) 39 694 6711

Australia (Sydney)  
(61) 2 9975 7188

Belgium  
(32) 2-481 07 50

Brazil  
(55) 11 532-2830

Denmark  
(45) 42 17 10 00

Finland  
(358) 0437 5236

France  
(33) 1 4604 1010

Germany  
(49) 89 99 351-0

Hong Kong  
(852) 2 572-8988

Italy  
(39) 2 6713101

Japan  
(81) 3 5560 8970

Latin America  
(305) 358 7830

Malaysia  
(603) 245 5660

Mexico  
(52) 5 208 0360

Netherlands  
(31) 20 696 6031

Norway  
(47) 22 62 73 47

Portugal  
(351) 1 7928750

Singapore  
(65) 223 0233

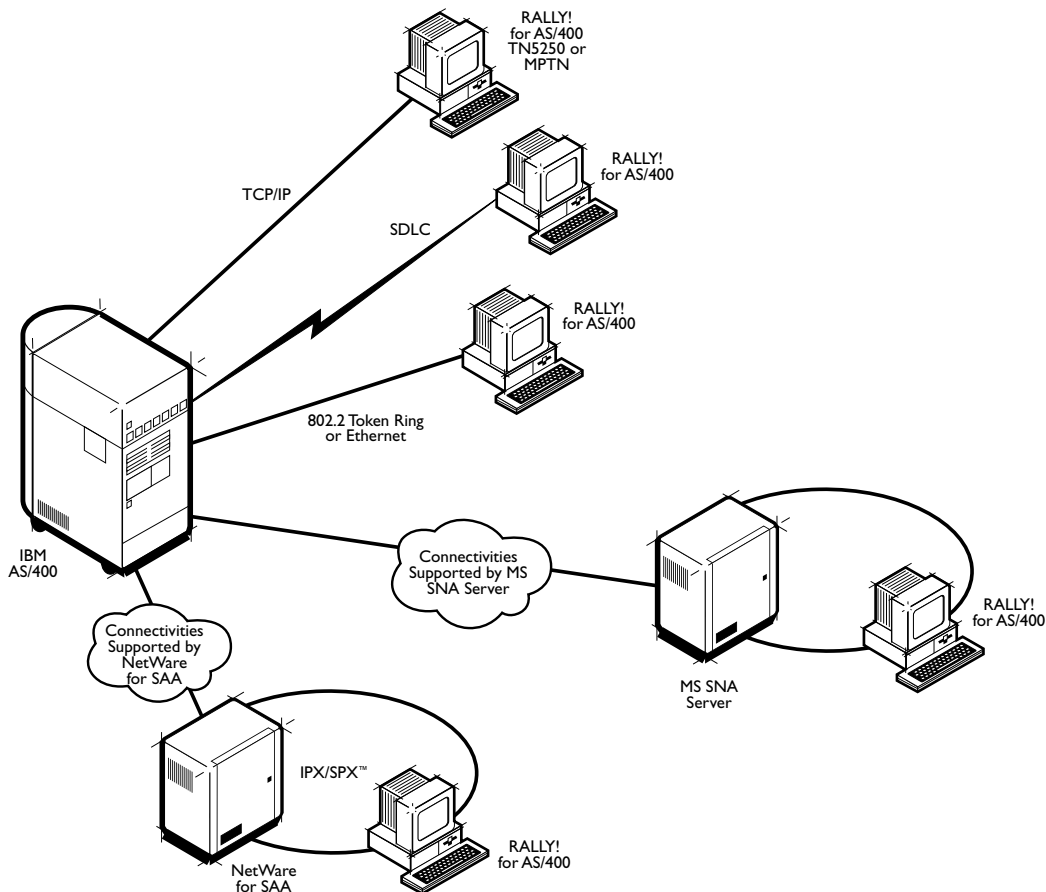
Spain  
(34) 1 300 86 00

Sweden  
(46) 8 6307530

Switzerland (Zurich)  
(41) 1 289 90 11

Switzerland (Geneva)  
(41) 22 879 04 10

United Kingdom  
(44) 1189 890 390



## Features at a Glance

### RALLY! for AS/400

- Fastest and most stable 32-bit APPC router on the market
- Printer and display emulation
- 80- or 132-column display capability
- Auto sign-on feature
- AnyNet (MPTN) support
- Multiple sessions in sizable windows
- Advanced look and feel with configurable toolbar
- MS® Office compatibility
- Bookmarks and page events (32-bit)
- QuickPad, hot spots, and macro support
- Dynamic color editor
- OLE 2.0 linking (32-bit)
- Versatile support for NS/Router®, PC Support Router, Microsoft SNA Server, NetWare® for SAA®, TCP/IP (TNS250)
- Also supports Token Ring, Ethernet and SDLC
- APIs:
  - ODBC Driver
  - Transfer
  - EXTRA! Basic
  - HLLAPI
  - WinHLLAPI
  - EHLLAPI
  - Attachmate HLLAPI
  - WOSA HLLAPI
  - ATMAPI (Enterprise Access Library™)
  - APPC
- Copy/Paste functions with DDE server support
- Compatible with Attachmate ToolSet

## System Requirements

### 16-bit:

- IBM compatible PC/XT™ or AT®, IBM PS/2® with 2MB or more of memory
- Any monitor supported by Microsoft Windows
- PC AT Standard (83-key), IBM-Enhanced (101-key), or ABNT (204-key) keyboard and a mouse
- 7.0 MB available hard disk space and at least one 3.5" disk drive
- Windows 3.1 or above running in standard or enhanced mode (real mode is not supported)
- IBM PC Support/400 version 2 release 2 or above on the client if using the PC/Support router option
- IBM PC Support/400 version 2 release 2 or above or IBM Client Access/400™ on the AS/400
- LAN Connection Only: IBM LAN Support Program or compatible 802.2 driver
- TNS250 and AnyNet support requires a Windows socket (WINSOCK) compatible TCP/IP stack

### 32-bit:

- IBM compatible PC AT 486/DX 33 Mhz or faster
- Any monitor supported by Microsoft Windows
- 12MB RAM (minimum) with Windows 95
- 16MB RAM (minimum) with Windows NT
- Standard (83-key) or IBM-Enhanced (101-key) keyboard and a mouse
- 20MB available hard disk space for full install

## Optional Products

QuickApp

QuickDB

SELECT!™

 **Attachmate**™

© 1996 Attachmate Corporation. All Rights Reserved. Printed in the USA. Attachmate, QuickApp, EXTRA! and SUPPORTWARE! are registered trademarks and RALLY!, QuickDB, QuickPad, SELECT!, Enterprise Access Library are trademarks of Attachmate Corporation. IBM, AS/400, PS/2, Office Vision, AT, AnyNet and SAA are registered trademarks and PC/XT and Client Access/400 are trademarks of International Business Machines Corporation. Lotus and SmartSuite are registered trademarks of Lotus Development Corporation. WordPerfect is a registered trademark of Corel Corporation. Microsoft, Windows, Windows NT and MS are registered trademarks and BackOffice is a trademark of Microsoft Corporation. NetSof and NS/Router are registered trademarks of NetSof. NetWare is a registered trademark and IPX/SPX is a trademark of Novell, Inc. All other trademarks or registered trademarks are the property of their respective owners.